

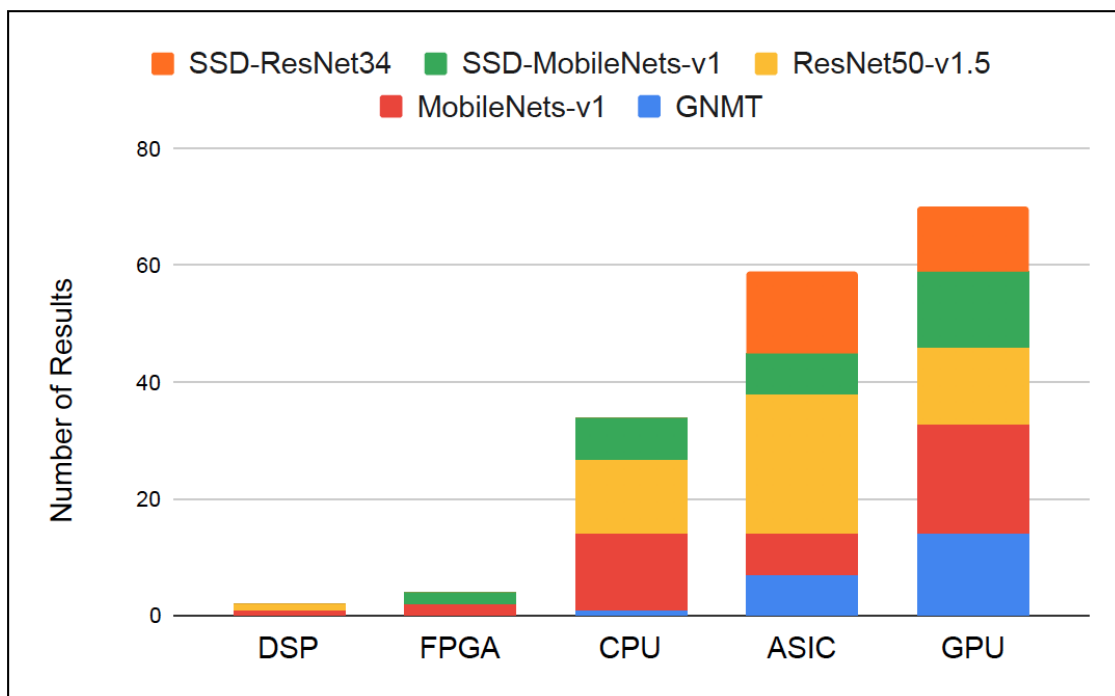
AI EDGE COMPUTING FEATURE

MLPerf: The New Industry Benchmark for AI Inference at the Edge

TOPS. FLOPS. GFLOPS. AI processor vendors calculate the maximum inference performance of their architectures in a variety of ways. Do these numbers even matter?

Most of them are produced in laboratory-type settings, where ideal conditions and workloads allow the device under test (SUT) to generate the highest scores possible for marketing purposes. Most engineers, on the other hand, could care less about these theoretical possibilities.

[Read more](#)



EDGE ANALYTICS NEWS

Litmus Automation Integrates Off-the-Shelf Analytics Functions in LoopEdge IoT Edge Computing Platform

Litmus Automation has launched 'Ready Analytics' for its LoopEdge Industrial IoT Edge Computing Platform. Ready Analytics is a purpose-built analytics dashboard that reduces setup and configuration time for a variety of industrial analytics functions.

[Read more](#)

EDGE COMPUTING NEWS

BOXER-8220AI: Powering AI with NVIDIA Jetson Nano

AAEON, a developer of AI edge computing platforms, announced the release of BOXER-8220AI box PC powered by NVIDIA Jetson Nano. The NVIDIA Jetson Nano is the latest in edge computing technology from NVIDIA.

[Read more](#)

ADVERTISEMENT

The Current State of Machine Vision Technology

Machine Vision Technology is a fast growing market, with BCC Research estimating it's market value to be \$30.8 billion by 2021. You'll want to get ahead of this trend soon, and this webinar will discuss the key factors you must consider.

Sponsored by **ON Semiconductor**

ADVERTISEMENT

Engineering Survey

Enter to Win a \$100 Amazon Gift Card in time for Christmas!

Sponsored by **nVent/Schroff**

AI EDGE COMPUTING NEWS

OSS to Incorporate NVIDIA GPUs with NVLink, Marvell ThunderX2 Arm-based Servers

One Stop Systems, a provider of specialized computing solutions for mission critical edge applications, announced the release of SCA8000 compute acceleration expansion platform for use with Marvell ThunderX2 Arm based servers.

[Read more](#)

WEBCAST

Edge to Cloud Intelligence Is a Boon to Industrial IoT Platforms

Sponsored by: **Dell Technologies, IDC, Intel**

Date: **December 5, 2:00 p.m. ET**

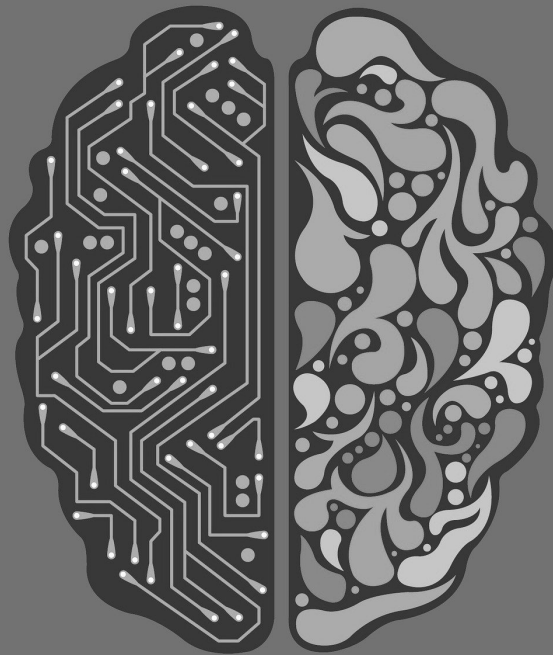
[REGISTER NOW](#)

AI EDGE COMPUTING FEATURE

True AI Edge Compute Arrives in Highly Integrated Processors, IP

The image processing subsystems of almost every high-end smartphone now integrate neural networks. Voice rec and speech processing experts will argue that what we now call AI has been running at the edge for years.

[Read more](#)



Share



Contact us

View the latest

[Embedded Products](#) | [Embedded News](#)

View the latest news, articles, white papers, and blogs from our channels
[IoT](#) | [Dev Tools & OS](#) | [Automotive](#) | [Industrial](#) | [Hardware](#) | [Networking](#) | [Processing](#) | [Storage](#)