

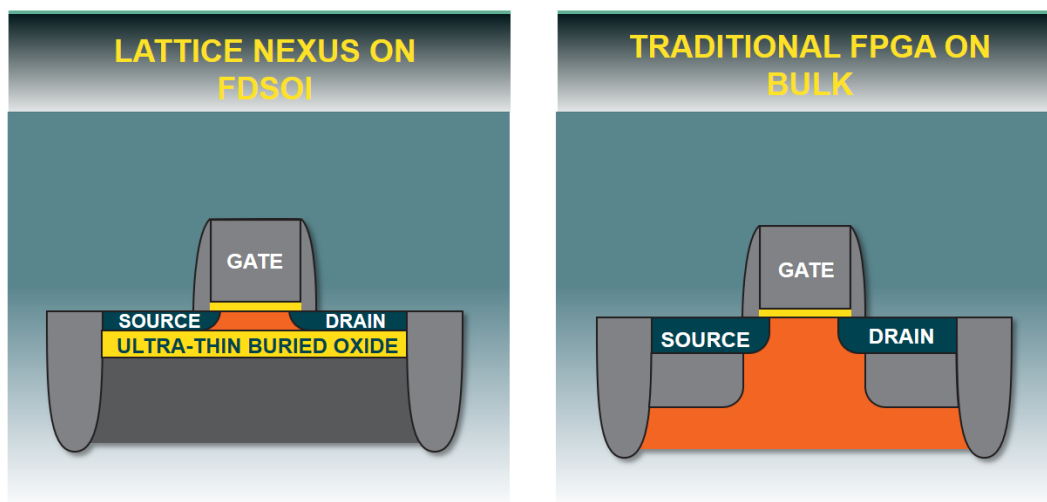
AI COMPUTING BLOG

## FPGA Platform from Lattice Semi Sets a New Standard for Efficiency

Along with the CrossLink-NX FPGA, built on the new Nexus platform, developers now have a solution for low-power AI and embedded vision applications.

[Read more](#)

### Circuit



AI COMPUTING NEWS

### Andes Certifies Imperas Models, Simulator as Reference for Andes RISC-V Vectors Core

Vector extensions are designed to support complex arithmetic operations required for applications involving linear algebra, such as supercomputers, cryptography, AI, ML, and deep learning.

[Read more](#)

NEURAL NETWORKING NEWS

### CEA-Leti Builds Fully Integrated, Bio-Inspired Neural Network

The research work presented at IEDM 2019 measured a 5x reduction in energy use compared to an equivalent chip using formal coding. The neural network implementation is made such that synapses are placed close to neurons, which enables direct synaptic current integration.

[Read more](#)

## Aetina Jetson TX2 4GB Edge AI Computing Platform Ready for AIoT Deployment

The Aetina Jetson TX2 4GB platform brings 1.3 TFLOPs of AI performance and 256 Nvidia CUDA cores. According to the company, the Jetson TX2 4GB has better price-performance-ratio than Jetson TX2, which reduces development expense on the same compute performance level.

[Read more](#)

WEBCAST

### Dealing with Legacy in Industrial IoT

Sponsored by: **Innodisk, SuperMicro, DFI**

Date: **January 16, 11:00 a.m. ET**

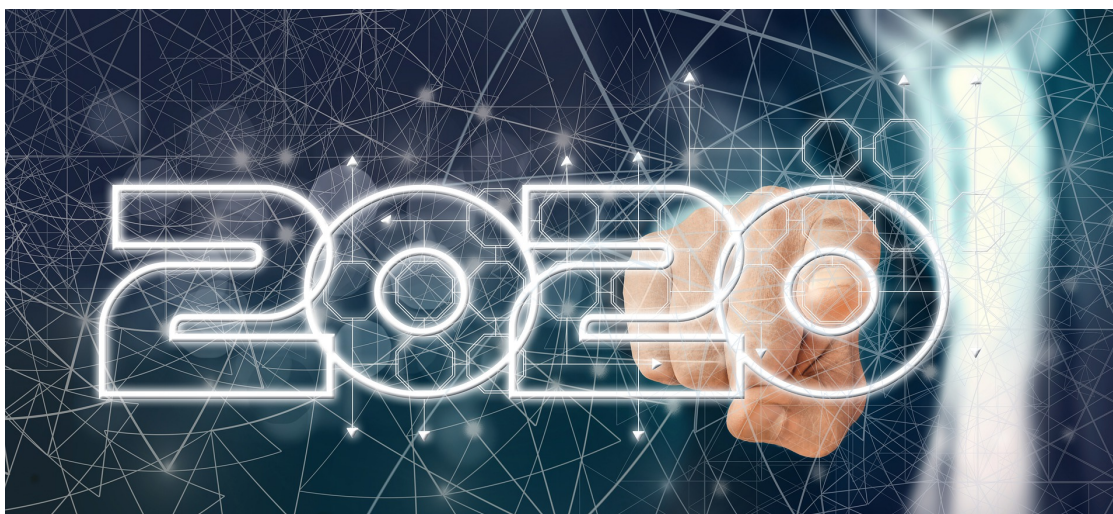
[REGISTER NOW](#)

AI EDGE COMPUTING FEATURE

## Expert Predictions for 2020: AI and Machine Learning

Experts from Western Digital and MathWorks share detailed thoughts on the future of AI and Machine Learning.

[Read more](#)



Share



Contact us

View the latest

[Embedded Products](#) | [Embedded News](#)

View the latest news, articles, white papers, and blogs from our channels

