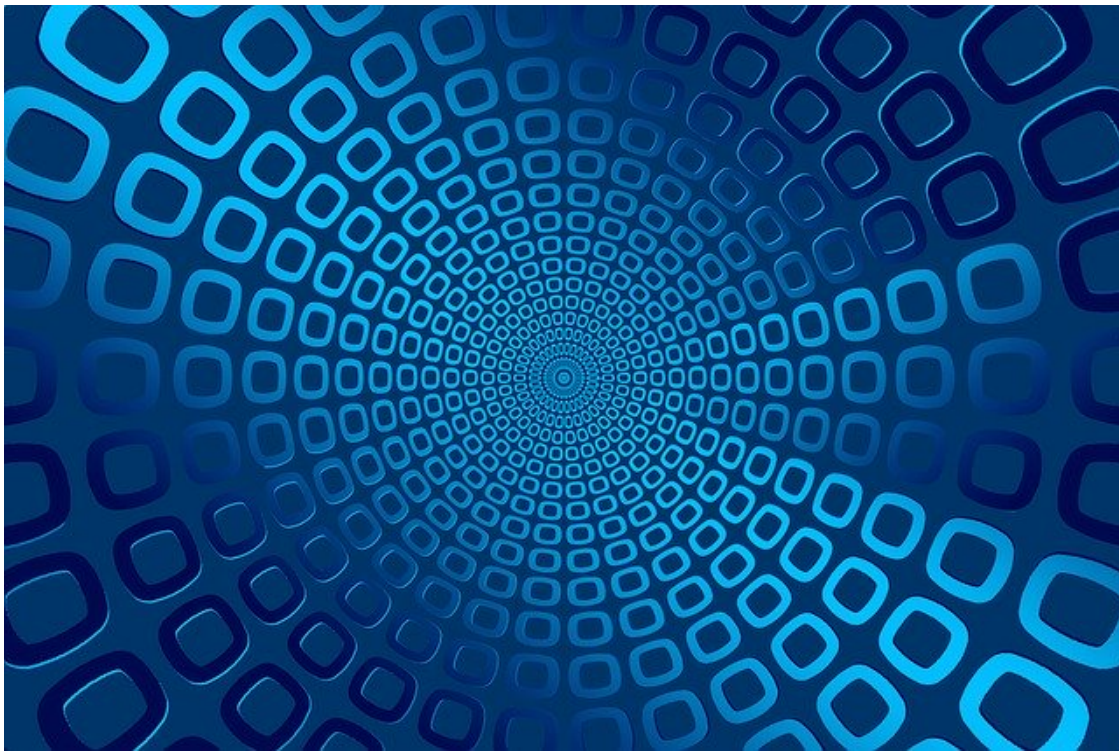


DEVELOPMENT TOOLS AND OPERATING SYSTEMS FEATURE

Embedded OS: real-time or not?

It is unusual for a modern embedded design, with any degree of sophistication, to be implemented without an operating system of some sort. There are plenty of reasons for this: scalability of the multi-tasking model, availability of standard software components (IP ? like drivers, protocols etc.)

[Read more](#)



POWER ELECTRONICS NEWS

Pentek Unveils 6.4 GHz A/D and D/A Jade 3U VPX Module

Pentek introduced the latest member of their Jade family of high-performance data converter 3U VPX modules based on the Xilinx Kintex Ultrascale FPGA. .

[Read more](#)

ADVERTISEMENT

Dev Kit Weekly: Ayla Networks Development Kit v2.0

The Ayla Networks Development Kit v2.0 contains an STM32 Nucleo board, Murata Wi-Fi-based shield, an integrated mobile app, and access to Ayla's IoT Cloud Platform that's powered by digital twin technology.

Sponsored by **Ayla Networks**

PROCESSING NEWS

OSS to Incorporate NVIDIA GPUs with NVLink, Marvell ThunderX2 Arm-based Servers

One Stop Systems, a provider of specialized computing solutions for mission critical edge applications, announced the release of SCA8000 compute acceleration expansion platform for use with Marvell ThunderX2 Arm based servers, in a press release.

[Read more](#)

ADVERTISEMENT

Comprehensive Management & Connectivity of IT Assets.

Digi Connect? IT Console Access Servers offer a secure, scalable, equipment- and network-agnostic, console port-based solution to connect remote IT devices in the data center.

Sponsored by **Mouser Electronics**

6G NETWORKING NEWS

Rohde & Schwarz and Fraunhofer research 6G at THz frequencies

Rohde & Schwarz, the Fraunhofer Institute for Telecommunications, Heinrich Hertz Institute, and the Fraunhofer Institute for Applied Solid State Physics IAF are making progress in the terahertz (THz) frequency band, related to the 6th generation wireless mobile communication (6G).

[Read more](#)

ADVERTISEMENT

Dev Kit Weekly: BeagleBone AI Edition

Here's your head start applying AI in the real world - BeagleBone? AI makes it easy to explore how artificial intelligence (AI) can be used in everyday life.

Sponsored by **BeagleBoard.org**

SPONSORED BLOG

Compact Industrial PCs Bolster Compute Power, Graphics and IoT Connectivity

Industrial designs are evolving with a steady rise in compute and graphics capabilities as well as the availability of flexible network configurations via I/O and wireless connectivity mechanisms to serve a wide array of applications in factory automation, automated test equipment, smart warehouse, digital signage and medical equipment.

[Read more](#)

ADVERTISEMENT

The Current State of Autonomous Vehicles Technology

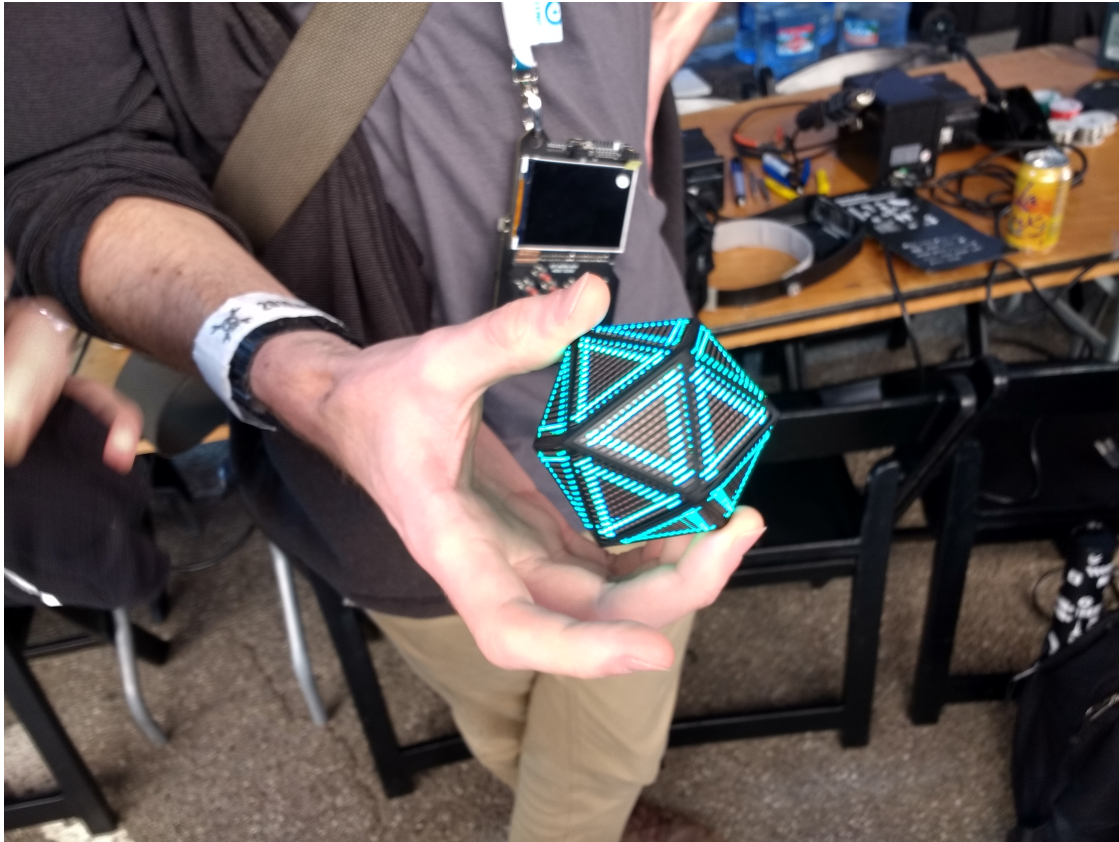
Autonomous Vehicles is a fast growing market in not just the United States, but globally Gartner expects multiple launches of autonomous vehicles around 2020. You'll want to get ahead of this trend soon, and this webinar will discuss the key factors you must consider below.

INDUSTRIAL FEATURE

Hackaday Superconference 2019: An Incredible Collection of People and Tech

Years ago I started my professional writing career as a part time gig at a little site called Hackaday.com. At the time, the site was a (literally) dark place on the Internet that published a few articles a day about interesting things that people were doing with technology.

[Read more](#)



WEBCAST

Industrial IoT Workloads Benefit from Edge to Cloud Intelligence

Sponsored by: **Dell Technologies, IDC, Intel**

Date: **December 5, 2:00 p.m. ET**

[REGISTER NOW](#)

ADVERTISEMENT

Engineering Survey

Enter to Win a \$100 Amazon Gift Card in time for Christmas!

Sponsored by **nVent/Schroff**

Share



Contact us

View the latest

Embedded Products | **Embedded News**

View the latest news, articles, white papers, and blogs from our channels

IoT | **Dev Tools & OS** | **Automotive** | **Industrial** | **Hardware** | **Networking** | **Processing** | **Storage**